



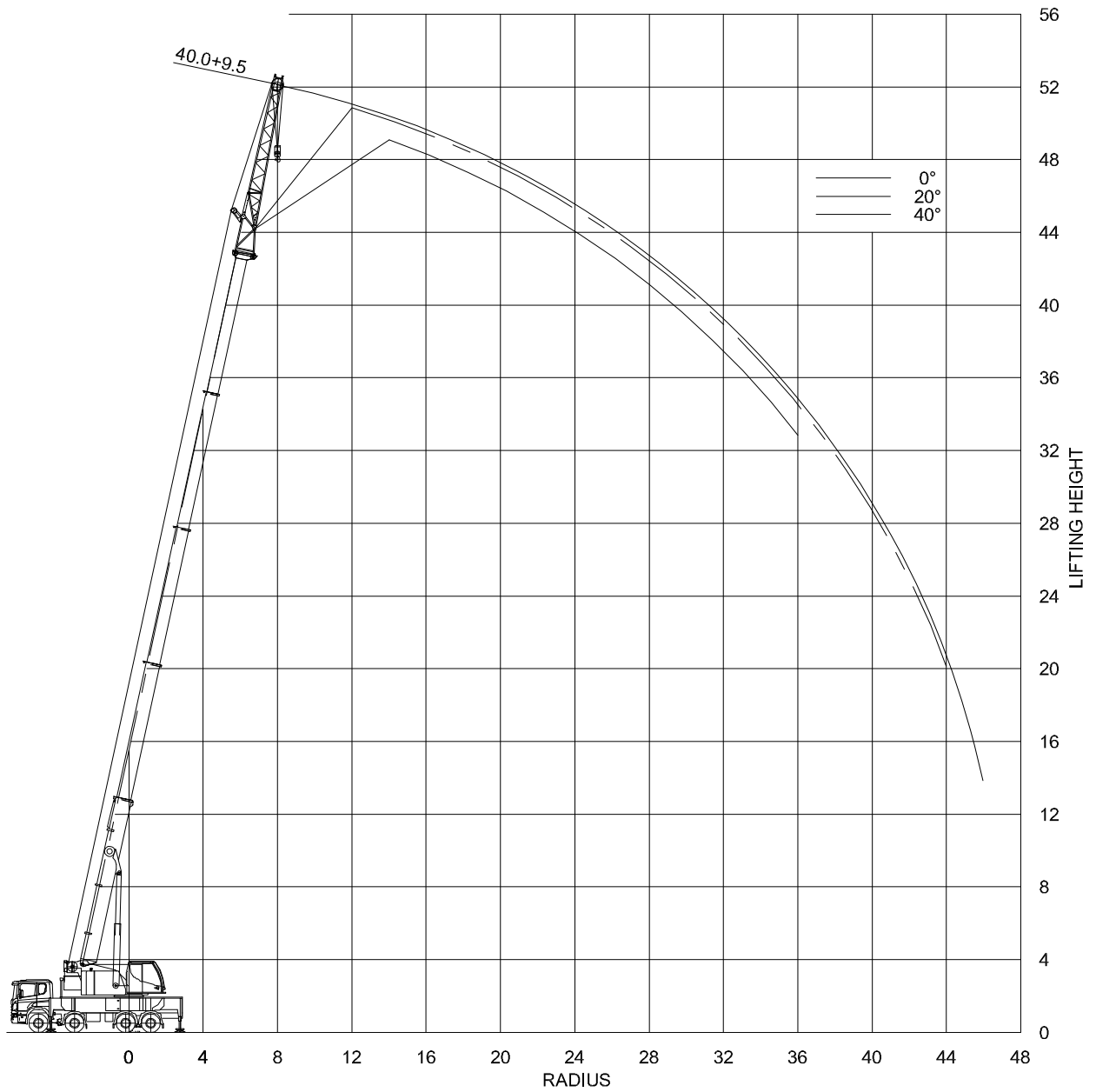
LIEBHERR LTF1060-4.1 (T)

Outrigger base: 6.96x6.84m / 5.77x5.03m

Mainboom (Outriggerbase (6.96x6.84m))																						
Ballast	Boomlength	Radius																				
		3	4	5	6	7	8	9	10	12	14	16	18	20	22	24	26	28	30	32	34	36
10.2	10.2	42.3	42	35.3	29.4	24.7																
	13.6	42.2	41.6	35.3	29.4	24.7	21	17.9	15.2													
	17	42.2	39	33.4	29.4	24.7	20.9	17.9	15.2	11.3	8.8											
	20.5	37	32.6	28.7	25.4	22.8	20.4	17.4	14.8	10.9	8.4	6.7										
	23.9	31.1	31.4	30.3	27.3	24.4	20.9	18	15.7	11.9	9.3	7.6	6.2	5.3								
	27.3	25	24.6	23.4	21.4	19.4	17.8	16.3	14.7	11.6	9.1	7.3	6	5	4.2	3.6						
	30.8		19.8	19.5	18.5	17.2	16	14.8	13.7	11.4	9.2	7.4	6.1	5.1	4.3	3.6	3	2.6				
	34.2			15.4	15.1	14.5	13.8	13.1	12.3	10.9	9.2	7.5	6.2	5.2	4.4	3.8	3.2	2.7	2.3			
	37.6				12.1	11.8	11.4	10.9	10.4	9.4	8.5	7.7	6.4	5.4	4.6	3.9	3.4	2.9	2.5	2.2	1.8	
	40				10.4	10.2	10	9.7	9.4	8.4	7.7	7	6.4	5.4	4.6	3.9	3.4	2.9	2.5	2.2	1.9	1.6

Mainboom (Outriggerbase 6.96x6.84m) Rear																					
Ballast	Boomlength	Radius																			
		2.5	3	3.5	4	4.5	5	6	7												
10.2	10.2	Rear-Special	60	55.1	50.3	44.9	40.2	36.7	30.5	25.7											
	10.2	Rear		55.1	50.3	44.9	40.2	36.7	30.5	25.7											

Mainboom (Outriggerbase 5.77x5.03m)																						
Ballast	Boomlength	Radius																				
		3	4	5	6	7	8	9	10	12	14	16	18	20	22	24	26	28	30	32	34	36
10.2	10.2	42.3	35.6	28.6	23.6	19.1																
	13.6	42.2	35.5	28.6	23.7	19.2	15.5	12.9	10.9													
	17	42.2	35.5	28.4	22.6	18.5	15.5	12.9	10.9	8	6.1											
	20.5	39.1	34.7	26.5	21.3	17.6	14.8	12.7	10.9	8	6.1	4.8										
	23.9	31.1	31.4	25.9	21.1	17.6	15	12.9	11.2	8.6	6.7	5.3	4.3	3.6								
	27.3	25	24.6	23.4	19.7	16.5	14.1	12.2	10.5	8.1	6.5	5.1	4.1	3.3	2.7	2.2						
	30.8		19.8	19.5	18.4	15.9	13.6	11.8	10.2	7.9	6.3	5.1	4.1	3.4	2.7	2.2	1.7	1.4				
	34.2			15.4	15.1	14.5	13.3	11.5	10.1	7.9	6.3	5.1	4.2	3.5	2.9	2.3	1.9	1.5	1.2			
	37.6				12.1	11.8	11.4	10.9	10	8	6.4	5.3	4.4	3.6	3	2.5	2.1	1.7	1.4	1.1	0.9	
	40				10.4	10.2	10	9.7	9.4	7.8	6.3	5.2	4.3	3.6	3	2.5	2.1	1.7	1.4	1.1	0.9	0.7





LIEBHERR LTF1060-4.1 (TK)

Outrigger base: 6.96x6.84m / 5.77x5.03m
 Jib offset: 0/20/40°
 Ballast: 0t / 5.0t / 8.0t / 10.2t

Mainboom with fixed jib (Outriggerbase 6.96x6.84m)																									
Ballast	JibLength	Boomlength	JibAngle	Radius																					
				3	4	5	6	7	8	9	10	12	14	16	18	20	22	24	26	28	30	32	36	40	44
10.2	9.5	10.2	0	8.4	7.4	6.8	6.3	5.8	5.4	5.1	4.8	4.1	3.3	2.6											
			20			6.7	6.1	5.8	5.6	5.3	4.9	4	3.7	2.8											
		40					5.3	5.1	4.9	4.8	4.4	3.7	3.7												
		27.3	0			8.4	8.4	8.2	7.9	7.6	7.3	6.7	6.1	5.5	5.1	4.8	4.4	4.1	3.7	3.3	2.9	2.5			
			20					6.5	6.4	6.3	5.9	5.7	5.4	5.1	4.6	4.1	3.8	3.7	3.4	2.9	2.6				
		40								5.2	5.2	5	4.8	4.7	4.6	4.2	3.8	3.7							
	30.8	0				7.7	7.6	7.4	7	6.7	6.2	5.8	5.3	4.9	4.5	4	3.7	3.4	3.2	2.9	2.6	2			
		20						6.2	6.1	5.8	5.5	5.1	4.6	4.2	3.8	3.6	3.4	3.2	3	2.7					
	40								5.1	5	4.8	4.4	4.1	3.8	3.6	3.4	3.2								
	34.2	0					7.7	7.6	7.4	7.2	6.9	6.6	6.2	5.6	5.1	4.6	3.9	3.4	2.9	2.5	2.1	1.5	1.1		
		20							6.2	5.9	5.7	5.5	5.3	5.1	4.5	4.1	3.6	3.1	2.6	2.3	1.6				
	40										5	4.8	4.7	4.6	4.5	4	3.7	3.2	2.7	2.3					
	37.6	0						6.2	6.2	6.1	5.8	5.5	5.2	4.9	4.6	4.2	3.8	3.5	3	2.6	2.2	1.6	1.2	0.8	
		20								5.5	5.2	4.8	4.5	4.2	3.9	3.7	3.5	3.2	2.7	2.4	1.7	1.2			
	40										4.7	4.6	4.4	4.1	3.9	3.7	3.5	3.3	2.8	2.4					
	40	0						5.5	5.5	5.4	5.1	4.9	4.8	4.3	4	3.8	3.6	3.4	2.9	2.5	2.2	1.6	1.1	0.8	
		20								5.2	4.9	4.4	4.1	3.9	3.7	3.5	3.3	3.1	2.7	2.3	1.7	1.2	0.8		
	40										4.6	4.3	4	3.8	3.6	3.4	3.3	3.1	2.8	2.4	1.8				

Mainboom with fixed jib (Outriggerbase 5.77x5.03m)																									
Ballast	JibLength	Boomlength	JibAngle	Radius																					
				3	4	5	6	7	8	9	10	12	14	16	18	20	22	24	26	28	30	32	36	40	44
5	9.5	10.2	0	8.4	7.4	6.8	6.3	5.8	5.4	5.1	4.8	4.1	3.3	2.6											
			20			6.7	6.1	5.8	5.6	5.3	4.9	4	3.7	2.8											
		40					5.3	5.1	4.9	4.8	4.4	3.7	3.7												
		27.3	0			8.4	8.4	8.2	7.9	7.6	7.3	6	4.8	3.8	3.1	2.5	2	1.7	1.3	1	0.8				
			20					6.7	6.5	6.4	6	5.2	4.2	3.4	2.8	2.3	1.9	1.5	1.1	0.8	0.6				
		40								5.3	5.2	5	4.5	3.7	3	2.5	2	1.6							
	30.8	0				7.7	7.6	7.4	7	6.7	6	4.9	4	3.3	2.7	2.3	1.9	1.6	1.2	1	0.8				
		20						6.2	6.1	5.8	5.4	4.4	3.6	3	2.5	2.1	1.7	1.4	1.1	0.9					
	40								5.1	5	4.7	3.9	3.2	2.7	2.2	1.8	1.5								
	34.2	0					6.9	6.9	6.8	6.5	5.8	4.6	3.7	3	2.5	2	1.7	1.3	1.1	0.8					
		20							5.9	5.7	5.1	4.1	3.4	2.8	2.3	1.9	1.5	1.2	1	0.7					
	40										4.9	4.4	3.7	3	2.5	2	1.7	1.3	1	0.8					
	37.6	0						6.2	6.2	6.1	5.3	4.2	3.4	2.7	2.2	1.7	1.3	1	0.7						
		20								5.5	4.7	3.8	3.1	2.5	2	1.6	1.2	0.9	0.7						
	40										4.7	4.1	3.4	2.7	2.2	1.8	1.4	1.1	0.8						
	40	0						5.5	5.5	5.4	5.1	4.1	3.3	2.6	2.1	1.6	1.3	1	0.7						
		20								5.2	4.6	3.7	3	2.4	1.9	1.5	1.2	0.9	0.6						
	40										4.6	4	3.3	2.7	2.1	1.7	1.3	1	0.8						