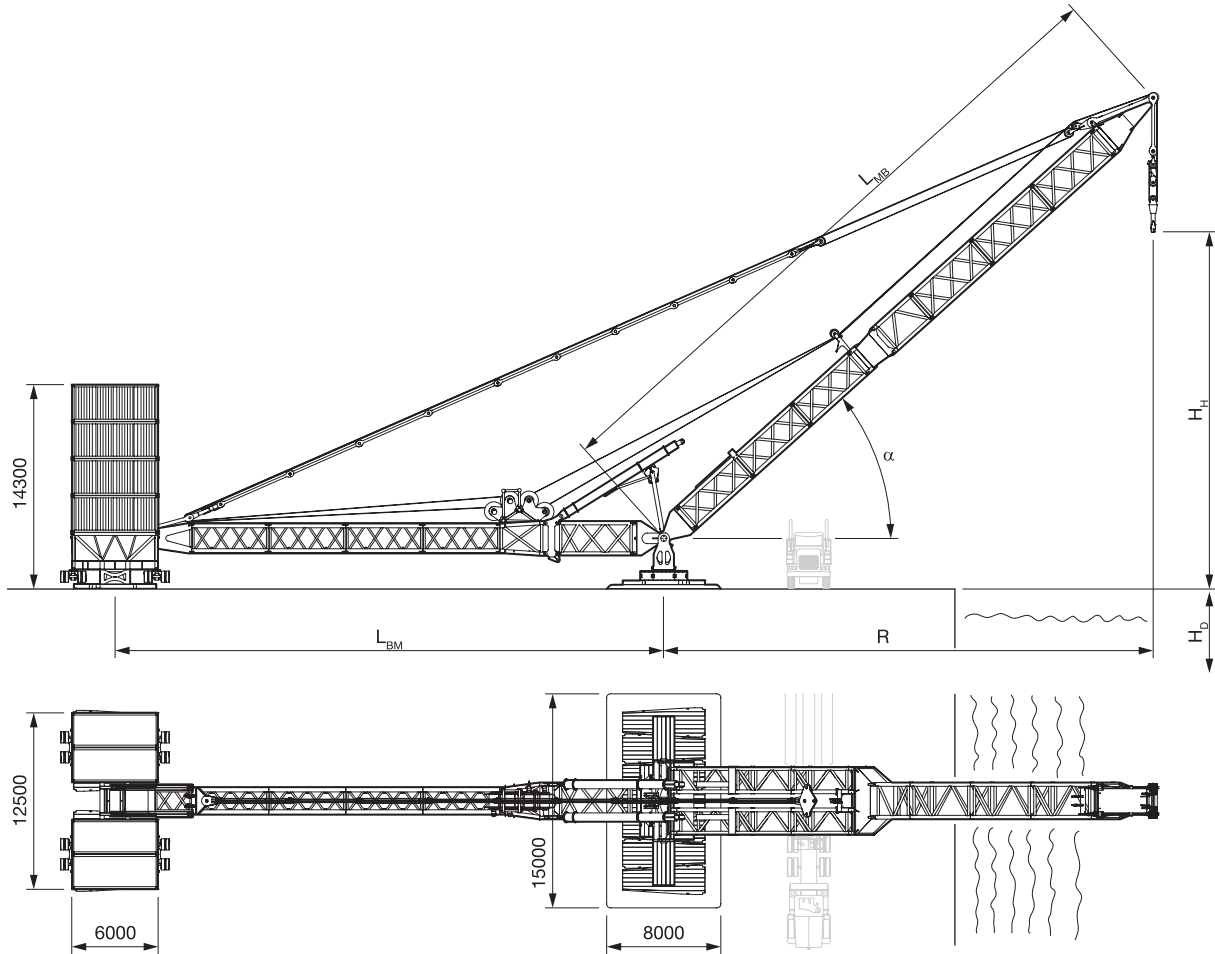


t = metric tons.  
 The content in this document is mentioned for reference use only. Values may differ from current data. Always contact Mammoet for current project calculations.



Dimensions are in millimeters.

### SPECIFICATIONS

	<b>MTC 15 40-28-600</b>	<b>MTC 15 46-38-600</b>	<b>MTC 15-2 45-29-600</b>	<b>MTC 15-2 45-39-600</b>
Max. lifting capacity	600 t	600 t	600 t	600 t
Radius (R)	6.3-36 m	7.1-41.1 m	6.8-41 m	6.8-41 m
Back mast length (L <sub>BM</sub> )	27.8 m	38.6 m	28.6 m	39.4 m
Main boom length (L <sub>MB</sub> )	40.5 m	46.2 m	45.2 m	45.2 m
Main boom angle (α)	27.1-82.5 °	27-82.5 °	26.1-82.6 °	26.1-82.6 °
Max. hoisting height (H <sub>H</sub> )				
@ minimum radius	34.5 m	40 m	41.5 m	41.5 m
@ maximum radius	12.5 m	15 m	16 m	16 m
Max. hoisting depth (H <sub>D</sub> )				
@ minimum radius	0 m	4.5 m	0 m	0 m
@ maximum radius	-23 m	-20 m	-26 m	-26 m
Max. ground bearing pressure <sup>1</sup>				
@ counterweight arrangement	8 t/m <sup>2</sup>	8 t/m <sup>2</sup>	13 t/m <sup>2</sup>	13 t/m <sup>2</sup>
@ base frame arrangement	17 t/m <sup>2</sup>	17 t/m <sup>2</sup>	18 t/m <sup>2</sup>	18 t/m <sup>2</sup>
No. of ballast containers	20	20	20	20
Max. weight of the ballast containers	520 t	520 t	502 t	502 t
Ballast material	Water or sand	Water or sand	Water or sand	Water or sand
Operational wind	≤ 12 m/s	≤ 12 m/s	≤ 12 m/s	≤ 12 m/s
Auxiliary crane	80 t mobile crane	80 t mobile crane	80 t mobile crane	80 t mobile crane

t = metric tons.

The content in this document is mentioned for reference use only. Values may differ from current data. Always contact Mammoet for current project calculations.

<sup>1</sup> Ground bearing pressure can be reduced with more load spreaders.